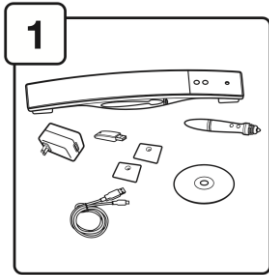
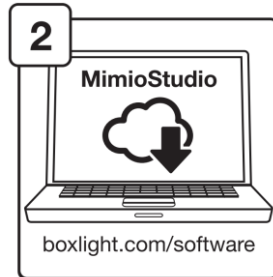


MimioTeach Installation Guide



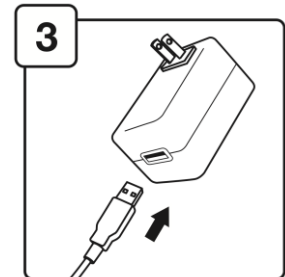
Unpack MimioTeach and make sure all parts are included:

- [MimioTeach bar](#)
- [USB power adaptor](#)
- [MimioHub](#)
- [USB cable](#)
- [Mounting plates](#)
- [MimioTeach stylus](#)



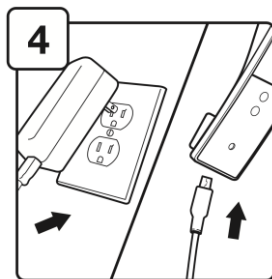
Download and install MimioStudio from [the Boxlight website](http://the.Boxlight website).

MimioStudio is available for Windows, Mac, and Linux.



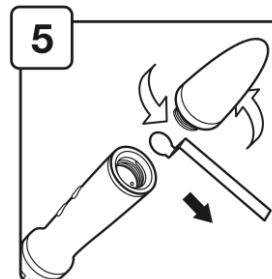
Connect the USB cable to the power adaptor.

If your MimioTeach came with international plugs, attach the correct one for your region.



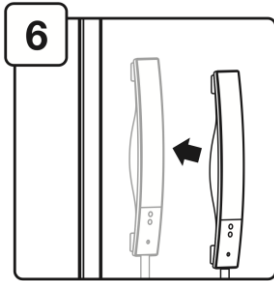
Plug in the power adaptor and connect the USB cable to the MimioTeach.

Alternatively, the MimioTeach can also run on 3 AAA batteries.



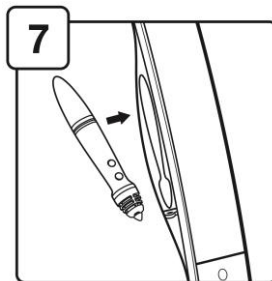
Unscrew the end of the MimioTeach stylus and remove the protective plastic strip to begin charging the batteries.

MimioTeach Installation Guide

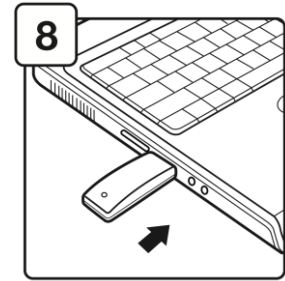


Place the MimioTeach bar on your whiteboard, using the metal mounting plates to attach it if necessary.

Position the MimioTeach on the upper left, 3 inches from the edge of your projector image.

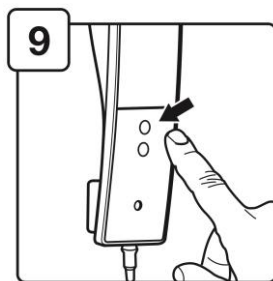


Rest the stylus in the cradle on the left of the MimioTeach bar. The stylus will begin to charge, and the ring will glow green when the stylus is ready.



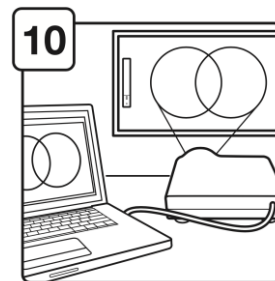
Insert the MimioHub into your laptop's USB port and launch MimioStudio.

MimioStudio must be running to connect with the MimioTeach.



Turn on the MimioTeach by pressing the Launch button (■). The status light will glow either green or amber:

- Connected successfully
- Cannot find a MimioHub



Calibrate the MimioTeach by pressing the calibration button (⊕).

Press the stylus onto each target until complete. Your MimioTeach is now ready to use!