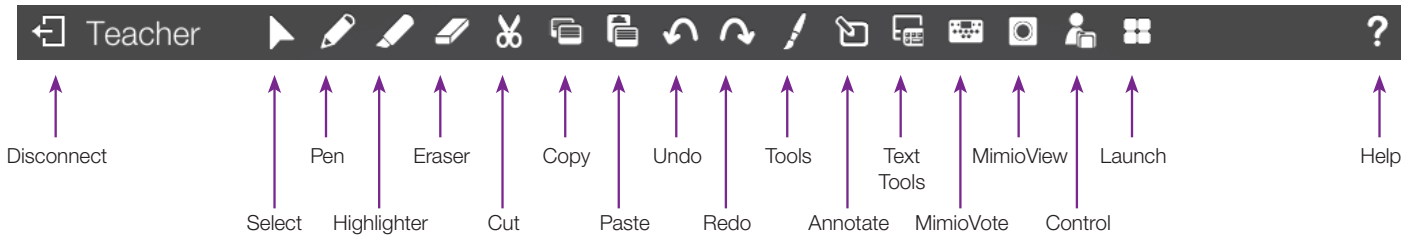
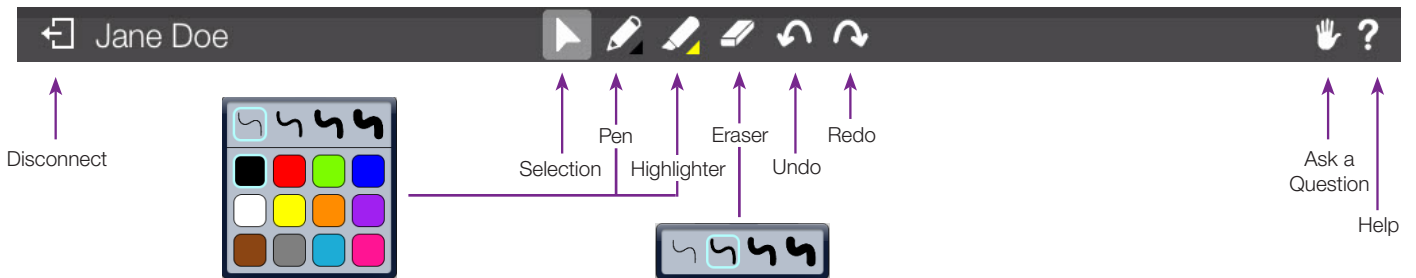


Teacher Control



Student Collaborate



How to Pass Control

Control can be given to any student who is using a MimioPad™ tablet or a mobile device* with the MimioMobile™ app. Click on the Control icon and select the student device to which you wish to transfer control.

Take back control by tapping the available button on the teacher mobile device.

Give control to another student by clicking “Control” and choosing that student’s device.



Control can also be accessed within MimioStudio™ software under Applications.

Note: Use of MimioPad tablets and/or devices with the MimioMobile app requires MimioStudio 11 software. All mobile devices must be connected to the same Wi-Fi network as the teacher’s computer.

* Supported Devices: iPad 2 and higher, iPad mini, iPod Touch (4th generation and higher), iPhone (4 and higher), and Android 3.0 (Honeycomb) or higher phone and tablets.

Collaborate

Up to fifty mobile devices, MimioPad tablets, or a combination of both can be connected at once. Teachers can have a single student or the entire class work on the same activity, pause student sessions, share them in any combination on the front-of-the-class display, or hide all the sessions. For on-the-fly collaboration opportunities, you can use the Quick Collaborate feature from the Launch menu to work on blank Notebook pages.

Accessing Collaborate and Quick Collaborate

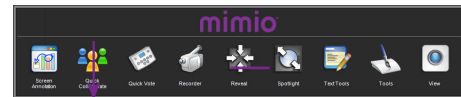
The Collaborate feature can be accessed within the MimioStudio software on the top toolbar.



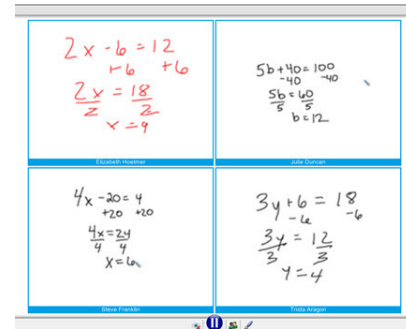
Collaborate



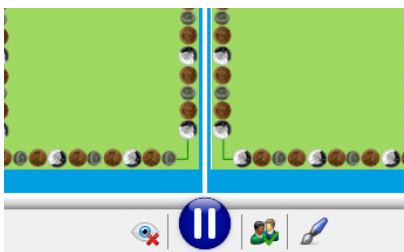
Launch



Quick Collaborate



MimioStudio Collaborate Toolbar



Hide

Pause

Select

Tools

Hide - Hides student activities on front-of-room display, while students continue to work on their devices.

Pause - Pauses the activity on the front of the room display and on all devices.

Select - Allows the teacher to select a single student or multiple students work to be displayed on the front-of-room display.

Tools - Opens and Closes the MimioStudio toolbar.

MimioStudio Collaborate Toolbar - Select Mode



1. **Select** a student by clicking on the student's workspace. To **Deselect** a student click on their workspace again.
2. Click to view selected students on the front-of-room display.
3. Click to exit select mode and return to all student view.



Home

Once you are viewing only the selected students, click the Home button to return to all student view.

Collaborate (cont.)

On-Screen Indicators



Indicates a student has left the MimioMobile app, but is still connected to the (teacher) computer.



Indicates a student has left the MimioMobile app, and is disconnected from the (teacher) computer.

Assessment

You can get real-time assessment with the MimioStudio Quick Vote feature using mobile devices with the MimioMobile app, the MimioVote™ assessment, or a combination of both. When using mobile devices with the MimioMobile app, you have the following open-response assessment options: short answer, essay, and numeric questions.

Teacher-Led and Self-Paced Assessment modes are available using the standard MimioVote toolbar at the bottom of the screen. Note that the toolbar must first be enabled.



The Quick Vote tool can also be accessed within MimioStudio software under Applications.

