

Thank you for using Boxlight's ProColor Display. This QuickStart guide will help you set up and use your new unit. More detailed information is available in the User Guide at [mimio.boxlight.com/documentation](http://mimio.boxlight.com/documentation).

## Cautions

### Placement

- Do not place the unit on an unstable cart, stand, tripod, bracket, table, or shelf.
- Do not expose the unit to direct sunlight or other sources of heat.
- Do not put the unit near appliances that generate magnetic fields.
- Do not handle liquids near or on the unit.
- Never spill liquid of any kind into the unit
- Do not put heavy objects on top of the unit.

### Power Supply

- Check that the unit is connected to a suitable power supply.
- Unplug the unit when lightning is happening.
- Consider providing a surge protector.

### LED Screen - Care and Cleaning

- Never use any hard or sharp object on the screen.
- Clean the screen with a soft, dustless and dry cloth.
- Never use water or the spray type cleaner to clean the unit.

### Temperature

- Do not place the unit near or over a radiator or a heater register
- If your unit is suddenly moved from a cold to a warm place, unplug the power cord for at least two hours to let that moisture may have formed inside the unit can dry completely.
- Normal operating temperature is 0 ~ 40°C

### Humidity

- Do not expose the unit to moisture.
- Ensure the indoor / inner environment drying and cool.
- Normal operating humidity is 10 ~ 90%.

### Ventilation

- Assure adequate ventilation, do not block any vent openings.
- Ensure that the unit has enough space for ventilation.
- Recommended spacing for adequate airflow: left, right and back  
-> 4 in. (10 cm), top > 8 in. (20 cm).

### Standby

It will enter standby mode but not turn off the unit when press the standby key

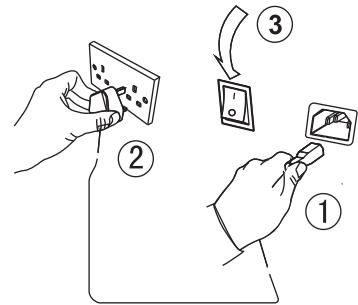
### Notes for Cleaning

There are ventilation holes on the back cover, do not allow moisture to enter here.

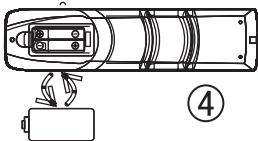
### Maintenance

Other than basic cleaning maintenance should only be performed by a qualified technician.

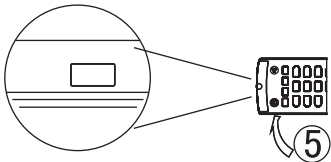
## First Time Power On/Off



- 1 Plug the power cable into the power socket on the rear of the unit. The supplied power cable is rated for this display, do not use a different power cord.
- 2 Plug the power cable into the AC power outlet.
- 3 Press the on/off button on the rear of the display to power up the unit. "I" means power on, "O" means power off.



- 4 Remove the cover on the rear of the remote control as shown at left and insert two AAA alkaline batteries.



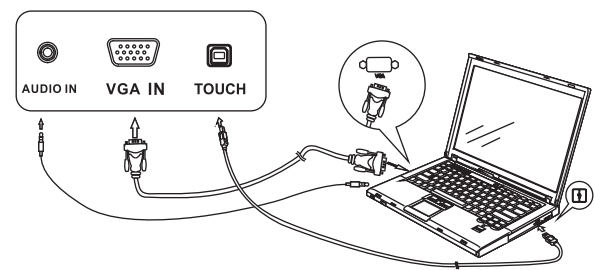
- 5 Press the POWER button on the remote control. When the indicator at the bottom right of the display turns blue, that means the display is powering up.



1. Do not use rechargeable batteries such as nickel-cadmium or lithium ion (Li-ion). Rechargeable batteries are not compatible with the remote control.
2. Press the power button on the remote control or the front panel power button for three seconds to shut down the display. When the indicator at bottom right turns red the display is off.
3. Do not disconnect the main power cable until the indicator turns red.

\*Image shown here is indicative only. If there is any inconsistency between the image and the actual product you receive, the actual product will govern.

## Connecting the Touch Interface to an External PC



Connect audio and video from the external computer to the display using **either** an HDMI cable or a VGA + audio cable combination (shown above). Then use a USB cable to connect the display's touch system to the same computer.

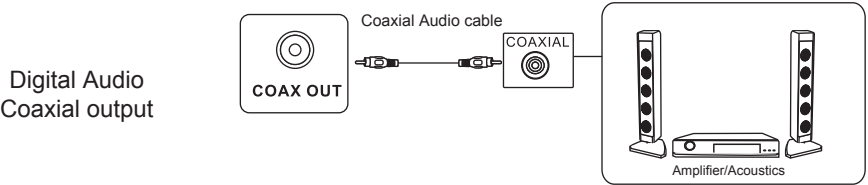
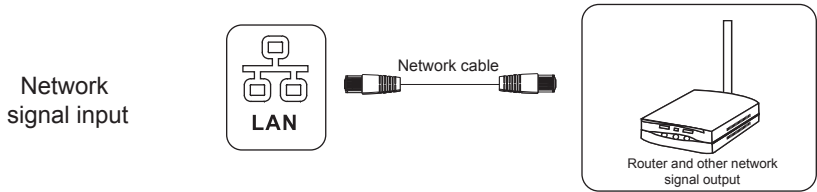
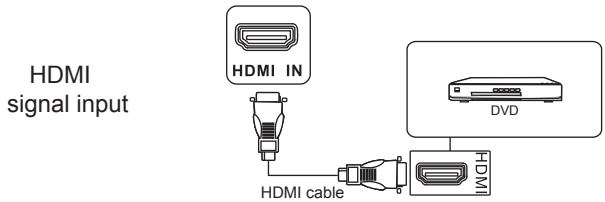
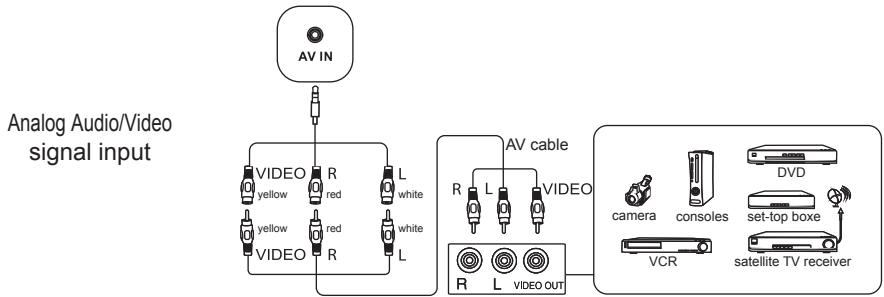
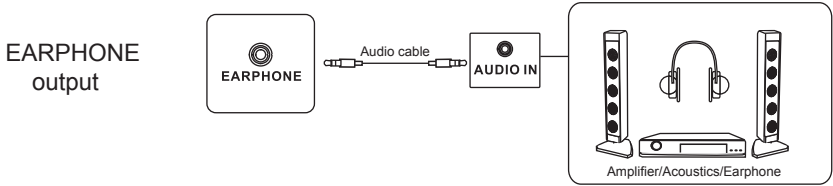
## Key & Port Description

The number of buttons and the screen contents of the device, please prevail in kind.

- Power on/off button  
Turns display on/off. To put the display into energy-saving mode press this button for 2 seconds.
- Home button  
Returns the display to the Home Page of the interface
- Return button  
Return to the previous level menu
- Menu button  
Brings up the function menu
- VOL+/VOL-  
Turns volume up/down
- Android USB interface  
Connect USB devices such as flash drives, keyboard, external drives, etc. to the included Android system.
- Built-in computer USB interface  
Connect USB devices such as flash drives, keyboard, external drives, etc. to the optional built-in Windows computer system.

## Video/Audio Connections

The configurations below are provided as representative examples. The actual input/output configuration of your display is provided in the Users Guide available at [mimio.boxlight.com/documentation](http://mimio.boxlight.com/documentation).

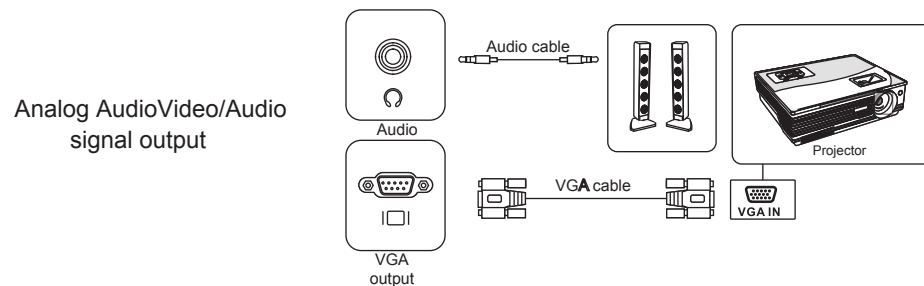
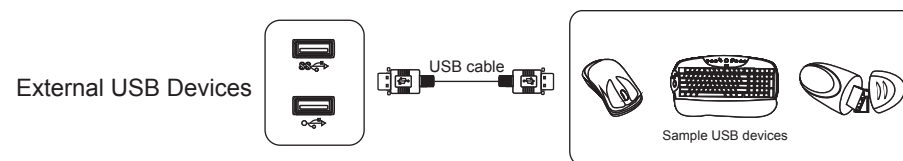
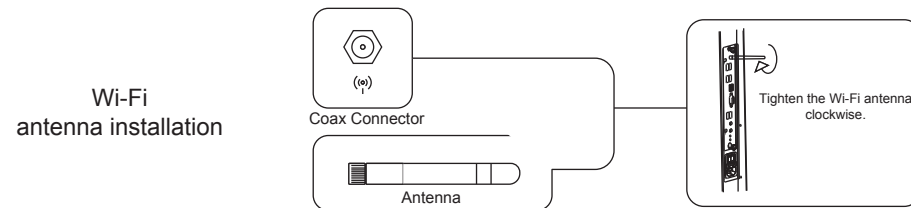
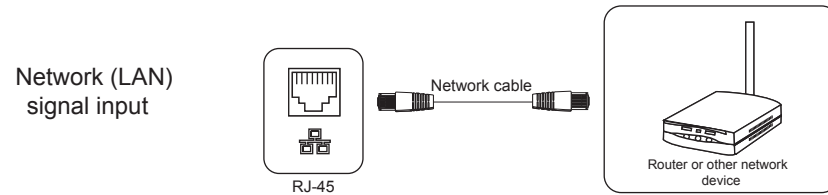


# ProColor Displays Series1 | QuickStart Guide

mimio.boxlight.com

## PC Connections

The configurations below are provided as representative examples. The actual input/output configuration of your display is provided in the Users Guide available at [mimio.boxlight.com/documentation](http://mimio.boxlight.com/documentation).



## For More Information

The following are available at [mimio.boxlight.com/documentation](http://mimio.boxlight.com/documentation):

- User's Guide
- Service Manual
- Connector diagram
- Display technical drawing (detailed dimensions)
- Wall mount technical drawing (detailed dimensions)
- Sell Sheet
- Wall mount installation guide
- Mobile cart installation guide

Technical support is available:

- Email: [service@boxlight.com](mailto:service@boxlight.com)
- Phone: 866.972.1549

