

## ProColor 750U PCAP

Interactive  
4K Ultra HD  
Flat Panel  
Touch Display

### Brilliant Interactive Performance.

ProColor interactive displays have exceptional image quality, from all angles--there are no bad seats in the class. They are exceptionally durable, for many years of real world, real class use. Designed for flexible wall, table top, or stand utilization. Backed 24/7/365 by BOXLIGHTS team of USA-based technicians. Brilliant performance, and exceptional service. That's the BOXLIGHT way.



### KEY FEATURES

- 4K Ultra HD
- 20 points multi touch
- Completely flat screen surface
- Multiple inputs
- Built-in OPS slot
- Windows 8 touch sensor certification
- Projected capacitive sensor
- Durable glass surface

### Model

### ProColor 750U PCAP

Interactive Flat Panel Display

### Product Specifications

Touch Detection Method	Capacitive touch system
Touch Tool/Response Time	Hand or conductive pen
Multi Touch	20 touch
Effective Screen Size	1650.24(H) x 928.26(V)mm
Resolution (Pixel)	3840 x 2160
Front Glass	Tempered glass 4.0t (antiglare type)
Overall dimensions (Higher)	1771(W) x 1050(H) x 88(D)
<b>LED Panel Specifications</b>	
Active Screen Size (Diagonal)	75 in / 190.5 m
Response Time	6.0 ms(Typ G to G)
Aspect Ratio	16:9
Pixel Format	QWUXGA (3840 x 2160)
Display Colors	10bit(D), 1.07 Billion Colors
Brightness	450 cd/m' (Typ)
Contrast Ratio	5000:1
Weight	187 lbs   85 kg (approx)
View Angle(Typ)	H:178° / V:178°

\*when using an external computer, a dedicated gpu card for the output display is required

### Award Winning Technical Support 24/7/365

BOXLIGHT products come with free lifetime technical support. Speak with a hands-on, in-house, ISF Certified® technician ready to service your projector should the need arise.

www.boxlight.com  
phone: 360-464-2119  
text 'pc75' to 51555

# ProColor 750U PCAP

Interactive  
4K HD  
Flat Panel  
Touch Display

## Be Brilliant.

The 4K HD interactive panel, done the Boxlight way.



20 points of multi-touch

### Comprehension and enthusiasm, accelerated.

This is what interactive display panels should have always been. Blazingly fast and responsive to the touch. Exceptionally bright and sharp, with ultra-wide viewing angles, enhancing the viewing experience, and the learning experience. Easily adjusted and positioned, for optimized interaction and participation.

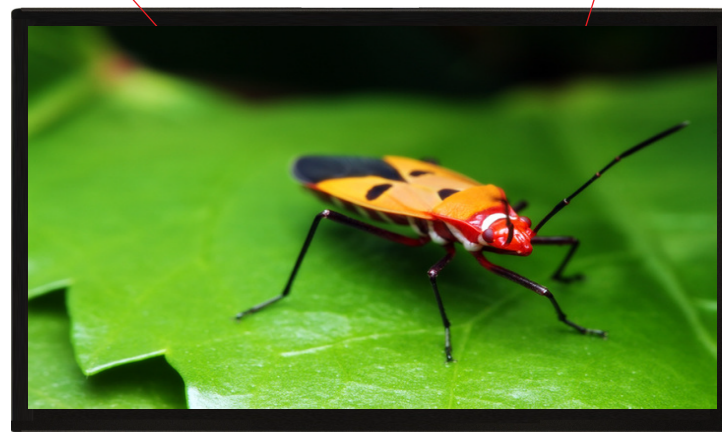


### You've never sounded so Brilliant.

SoundLite is presentation sound, done the BOXLIGHT way. Compact, easy to install, with a potent Class D amplifier. SoundLite 30W adds a high fidelity wireless microphone that automatically defers to the presenter's voice, over music, or other audio. Better sound, better understanding. Brilliant.



OPS slot for an optional Open Pluggable Specification PC, eliminating need for external computer.



4K Ultra HD



Shown with BOXLIGHT Rainier IFPD-MOBTLT mounting system



### Equations become revelations.

When inspiration hits you, or the class seems stuck, annotate, almost anything. From full-motion video to yesterday's homework, real time, on screen, even on-line. ProColor is fully compatible with Windows 7 and 8, and MAC OS 10 software and teaching programs.



Supports Full HD Resolution.



Supports 4K Native Resolution.

24/7/365

US-based technical support