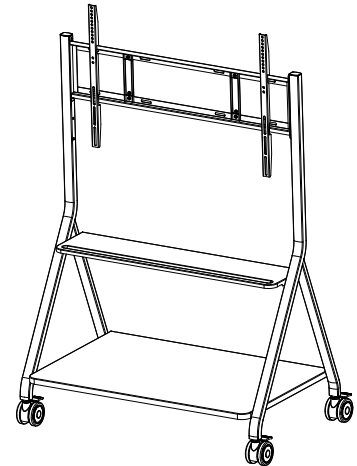


Install Guide for PROCOLOR MOBILE300 Stand

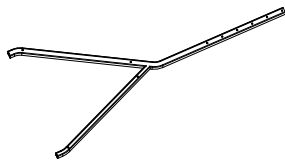
Please follow this installation and operation manual to insure proper use and safety requirements.

It's suggested that the Mobile Stand applies to the 55-88" inch interactive displays.

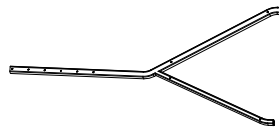
This stand can carry a maximum weight of 100KG.



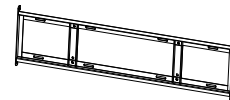
The parts list is as follows:



① **Left bracket** 1pc



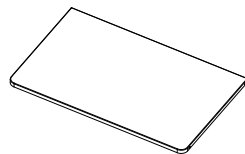
② **Right bracket** 1pc



③ **Wall mount** 1pc



④ **Tray** 1pc



⑤ **BigTray** 1pc

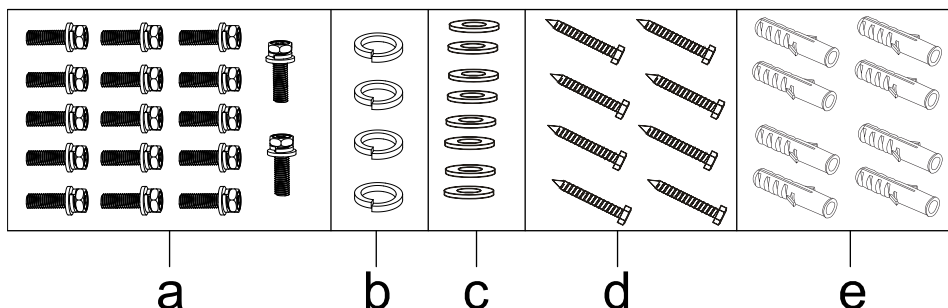


⑥ **Hang brackets** 2pcs



⑦ **Casters** 4pcs

Accessories

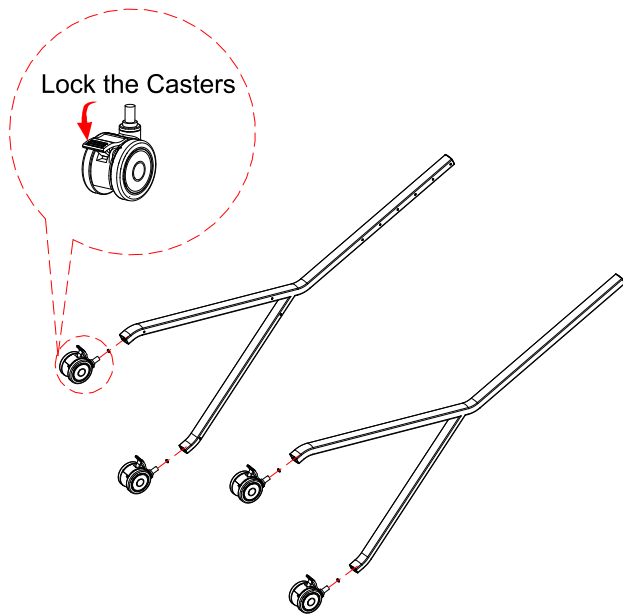


Self-Provided:



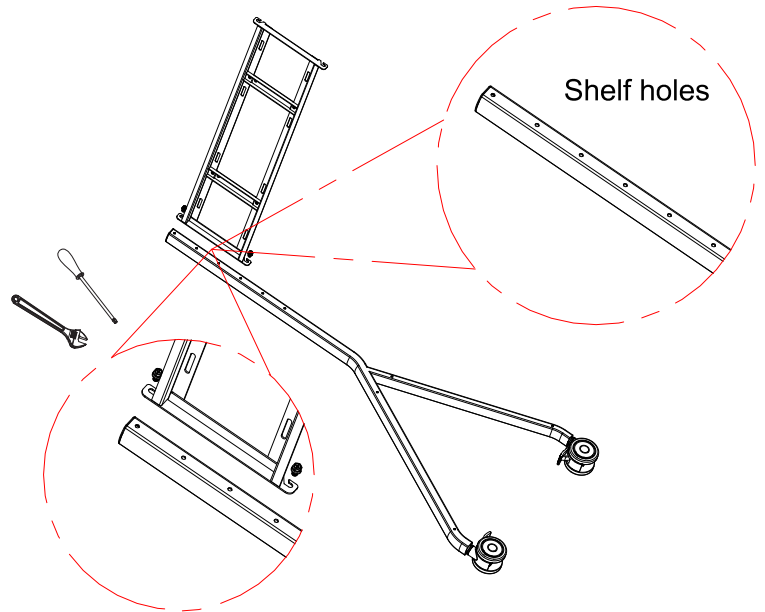
Step 1

Screw casters into the brackets.



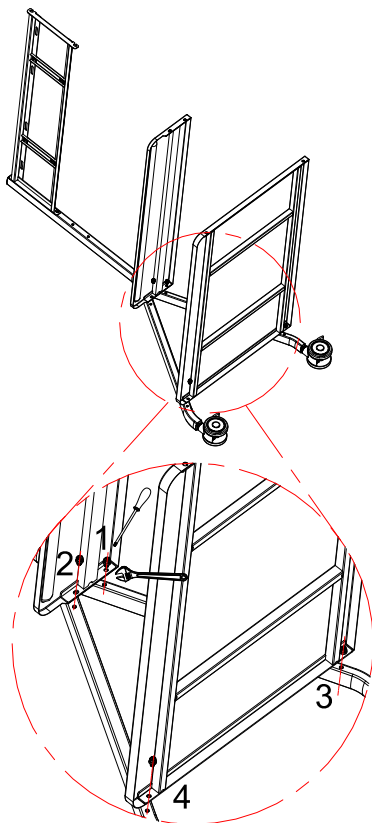
Step 2

Attach the wall mount.



Step 3

Attach the trays.



Display Size	Matching hole position
55"	3rd and 6th holes
65" - 70"	2nd and 5th holes
75" - 86"	1st and 4th holes



Pay attention to the fixing direction of the wall mount.

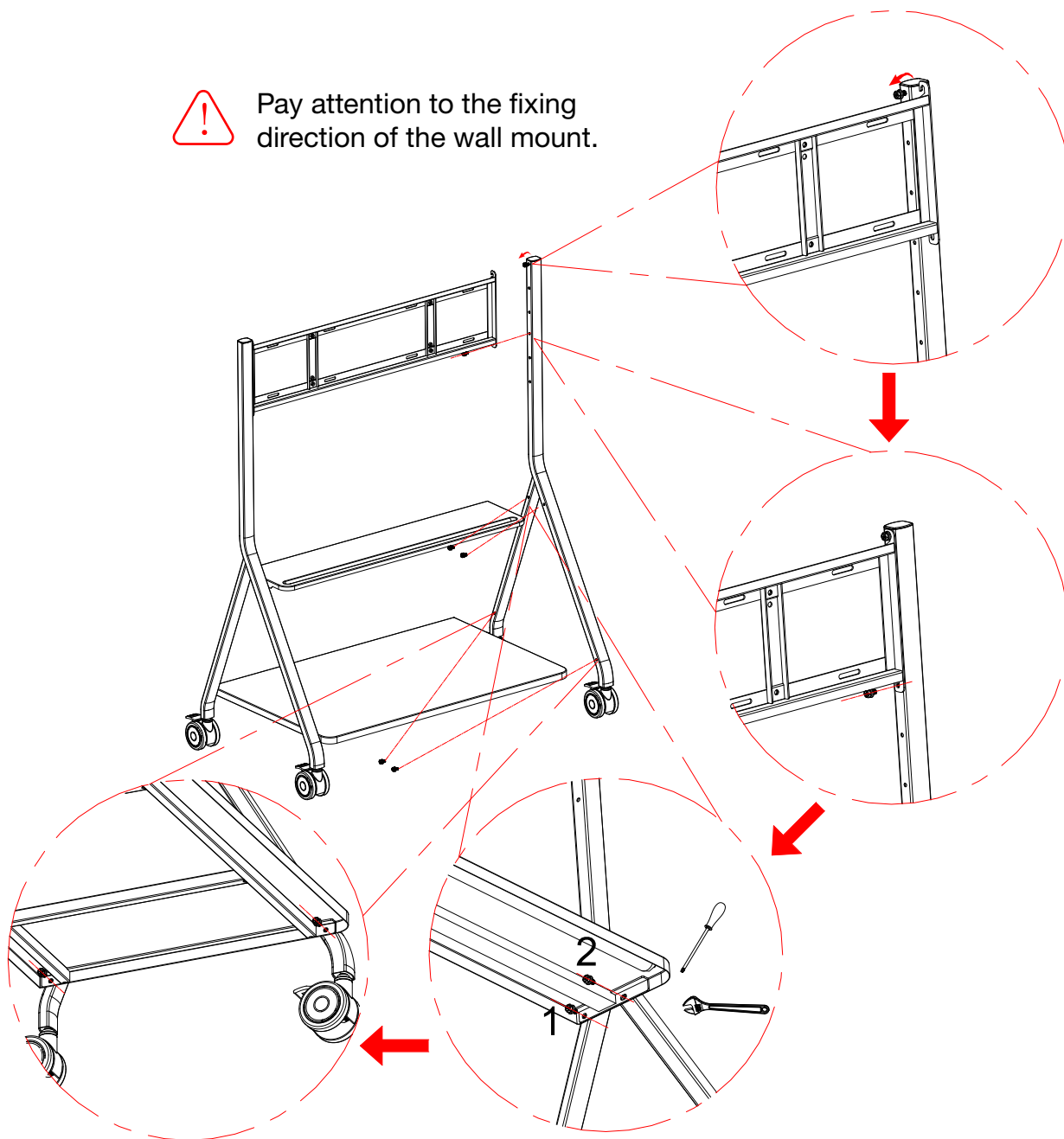
- 1.Lock the screw in the round hole.
- 2.Lock the screw in the oval hole.

Step 4

Attach remaining brackets.



Pay attention to the fixing direction of the wall mount.



- 1.Lock the screw in the round hole.
- 2.Lock the screw in the oval hole.