

# IMPACT Lux

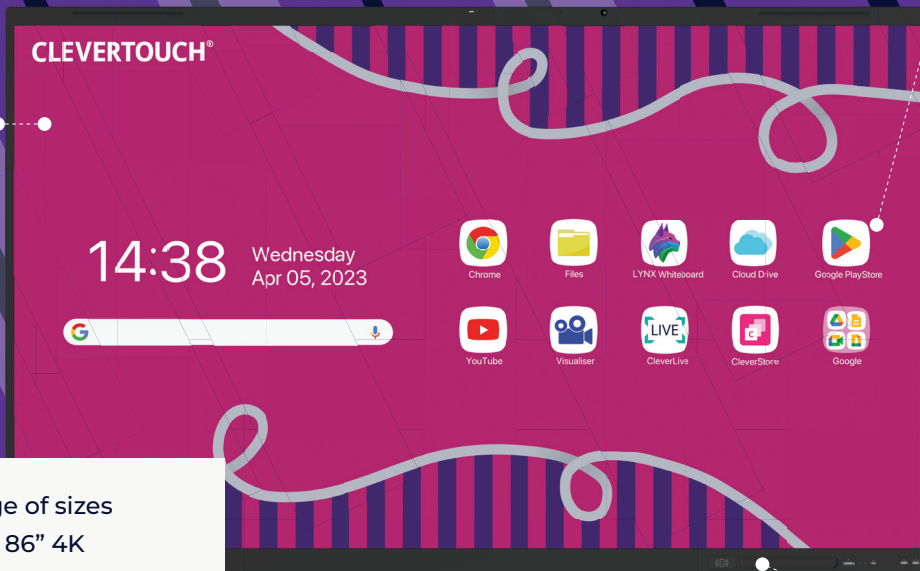
**NEW**

The perfect all-around solution  
for the modern classroom

Featuring high precision technology, LYNX Whiteboard –  
IMPACT Lux helps save time lesson planning with lots of  
resources and learning activities.

**NEW**

**Antibacterial glass**  
Keep germs at bay with  
state-of-the-art micro  
antibacterial glass.



**EDLA Certified**  
Access the Google  
Play Store and Google  
Workplace, along with  
the full Microsoft 365  
suite, directly from the  
screen. Use apps such  
as Google Drive, Docs,  
Sheets, Slides, Teams,  
Word and PowerPoint.

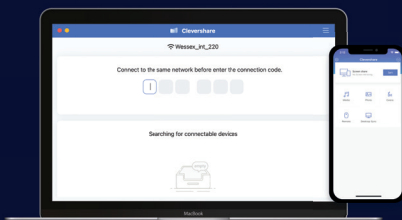
**NEW**

**Any Screen,  
Any Time**  
With integrated NFC,  
users can simply  
swipe their fob, card  
or device to load their  
personal profile on any  
Clevertouch anywhere  
in the world.

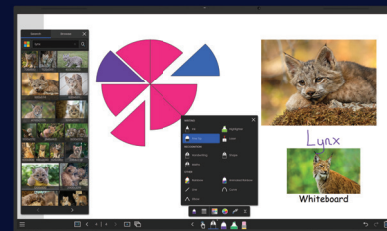
**NEW**

Available in a range of sizes  
65" 4K | 75" 4K | 86" 4K

Software included at no extra cost



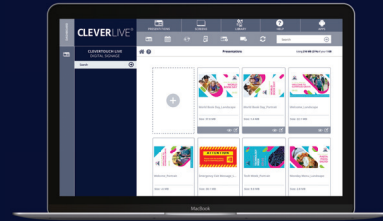
Any device can download the Clevershare app and connect  
instantly by typing in the code on the Clevertouch screen.  
Clevershare App is free to download and compatible with  
Android, Windows, iOS, and Chrome devices.



LYNX Whiteboard is a free-to-use lesson building app,  
enabling student collaboration. The most dynamic,  
intuitive user experience of any whiteboard



MDM stands for Mobile Device Management. We have partnered with leading MDM specialists, Radix Technologies, to consolidate all of your organization's displays into one management system. Link your entire Clevertouch fleet to your MDM account, so that you can control them from anywhere.



CleverLive is a cloud digital signage content management platform which connects all your Clevertouch products enabling broadcasting of messages, announcements and alerts. Use editable templates or create your own presentation and deploy them across any number of screens, on any number of sites, anywhere in the world.

## Key Features



Designed for blended learning



LYNX Whiteboard lesson creation app



Dynamic Stylus with CleverInk



Clevershare screen mirroring



Remote management MDM



Customize your home screen



Award winning interactive display



Compatible with Google Classroom and Microsoft 365

## What's New?



Anti Bacterial Glass



HPIR Touch Frame, Palm Rejection



Top Mounted USB-C and USB-C Out



Integrated NFC/RFID



Google Enterprise Partner



8GB Ram & 128GB ROM



Android 13



2x 20w front facing  
2x 10w sub woofer

# IMPACT Lux Specifications

## Display Panel

Diagonal Size	65" 4K, 75" 4K, 86" 4K
Screen Type	LCD
Aspect Ratio	16:9
Display Colors	1.07 Billion (10 bit)
Resolution	4K UHD (3840x2160)
Response Time	5ms
Refresh Rate	60Hz
LCD Viewing Angle	178°
Brightness	500 cd/m2
Contrast Ratio	4000:1
Dynamic Contrast Ratio	6000:1
Glass Hardness	AG Tempered Glass - Mohs Level 7
Glass Thickness	3mm
<b>NEW</b> Glass Type	Low Parallax 0mm Air Gap - Heat tempered - Anti Glare & Anti Smudge for durability - Super Glide Surface
<b>NEW</b> Antibacterial Glass	Yes
<b>NEW</b> Antibacterial Power Button	Yes
Main Board	RK3588
Life of Screen	50,000 Hours
NTSC	72%

## Interactivity

Writing Technology	High Precision IR Technology + Material Classification Sensor
<b>NEW</b> Continuous Touch Points	50
Touch Resolution	32768x32768px
Response Time	≤5ms
Touch Accuracy	±1mm
Minimum Object Size	2mm
Touch Tool	Finger, passive pen, opaque objects
Simultaneous Writing	Yes
Ink In Tools	Yes - LYNX
Pens Included	2
<b>NEW</b> Pen Type	Dual Recognition Stylus   Super Cool Stylus 2.0
Pen Holder	Integrated magnetic pen holders
Pen Tip Diameter	3mm/7mm
Pen & Touch Differentiation	Yes
Pen Identities	2
Palm Rejection	Yes
Annotation Over Any Source	Yes
Classroom Essential Apps	Includes Whiteboard, Annotate, Timer, Media Players, Browser, PDF Reader, Screen Record, Spinner, Voting, Maths Tools
Compatibility*	Windows 10, Linux, Mac, Android, Chrome
Tracking Rate	≥1m/s
Scan Rate	≥100hz
Gestures & Edge Swipes	Windows Supported, OSX With additional Driver

## Connectivity

OPS Slot	1 - Intel Spec 80Pin
HDMI In	3
HDMI Out	1
USB-A 2.0	3
USB Touch (type B)	3
<b>NEW</b> USB A 3.0 (faster data transfer)	2 x USB Front Type A 3.0 with faster data transfer 2 x USB Side Type A 3.0 with faster data transfer
<b>NEW</b> USB C (Video, Audio & Touch)	1 x USB Side Type C with video, audio, touch & network 1 x USB Front Type C with video, audio, touch, network, and 100W charging
<b>NEW</b> USB C (Data Transfer)	1 x USB Top Type C Supports data transfer for top mounted camera
<b>NEW</b> USB C Out	1 x USB Type C Out with video, audio, touch and network
Display Port In	1
LAN In (RJ45)	1
LAN Out (RJ45)	1
RS-232	Yes
Wake-on-Lan	Yes
Wireless Adapter	2.0 + WAP
Clevertouch WiFi Module	Yes
Bluetooth	Yes - 5.2
Audio In	1 (3.5mm)
Optical Out	1 (coax)
Headphone	1 (3.5mm)
Total touch out ports	3
NFC Reader / Writer	Integrated
Camera	Optional Extra
Proximity Sensor	Yes
<b>NEW</b> WiFi	IEEE 802.11a/b/g/n/ac/ax with 2 x 2 MIMO (hotspot only) (both 2.4 and 5 GHz bands)
<b>NEW</b> WiFi Speed	Capable of speeds up to 1GB

## Computing

<b>NEW</b> Operating System	Android 13
<b>NEW</b> System Version	Lux 13
<b>NEW</b> RAM	8GB
<b>NEW</b> Internal Storage	128GB
CPU	Quad Core A76 + Quad Core A55
GPU	Mali G610 MC4
Android Resolution	4K
Integrated Lux UI	Yes
<b>NEW</b> System Architecture	64-bit
<b>NEW</b> Google Certification	EDLA Certified (Enterprise Device Licence Agreement)
<b>NEW</b> Access to Google Playstore Apps	Yes (certified)
<b>NEW</b> Access to Microsoft Apps	Yes (certified)
<b>NEW</b> Access to Google Cloud Services	Yes (certified)

# IMPACT Lux Specifications

## Power

<b>Power Requirements</b>	100 - 240 ~ 50/60Hz 3.5A
<b>Power Consumption (Normal)</b>	65" 120W 75" 133W 86" 152W
<b>Power Consumption (Standby)</b>	≤0.5W
<b>Ultra Quiet Fanless Design</b>	Yes

## Operating & Storage Environment

<b>Operating Temperature</b>	0° to 40°
<b>Storage Temperature</b>	-20° to 60°
<b>Operating Humidity</b>	10% to 90% RH
<b>Storage Humidity</b>	10% to 90% RH
<b>Altitude</b>	Below 5000 metres

## Audio

<b>NEW Dual Front Facing, Bass Enhanced Speakers</b>	2 x 20W Front Facing + 2x 10W Subwoofer
<b>Audio Out</b>	Yes
<b>SPDIF / Fibre</b>	Yes
<b>Sound Channel</b>	2.2
<b>Line Array Microphone (noise cancelling)</b>	8-array
<b>Super Wide Sound</b>	Yes
<b>Amplifier Power</b>	95W

## IMPACT Lux Built-In Features

<b>LYNX™ App With Online Lesson Planning</b>	Yes
<b>Embedded Digital Signage</b>	Yes
<b>Clevershare™ Mirroring Any Device To The Board</b>	Free for the life of the screen (touch back)
<b>Integrated Personalized Account Profiles</b>	Yes
<b>Cloud Account Access</b>	OneDrive, Google Drive, LYNX Cloud
<b>Embedded Room Booking</b>	Yes
<b>Whiteboard Annotation</b>	Yes
<b>Email Out Direct From Touchscreen</b>	Yes
<b>Scan QR Code For Saving Work</b>	Yes
<b>Alerts and Announcements</b>	Yes
<b>Over-the-Air Updates</b>	Yes
<b>Remote Management Of Touchscreens (MDM)</b>	Yes - One year license
<b>NEW CleverLauncher™</b>	Yes
<b>NEW LynxShare™</b>	Yes
<b>NEW LynxCloud™</b>	Yes

## Physical Spec

<b>Panel Dimensions</b>	65" 1488 x 908 x 86mm 75" 1709.06 x 1038.75 x 85.7mm 86" 1957 x 1178.42 x 85.7mm
<b>Packed Dimensions</b>	65" 1628 x 208 x 1014mm 75" 1863 x 225 x 1155mm 86" 2110 x 225 x 1304mm
<b>Net Weight</b>	65" 37.90kg 75" 50.25kg 86" 63.90kg
<b>Packed Weight</b>	65" 46.45kg 75" 63.60kg 86" 80.35kg
<b>VESA Mount Point</b>	65" 600 x 400mm 75" 800 x 400mm 86" 800 x 600mm

## Inside your Clevertouch Box

<b>What's In The Box</b>	(1) Clevertouch IMPACT Lux (1) 1.5M Length HDMI Cable (1) 3M Length USB cable (A-B) (1) 1.5M USB C Cable (1) 3M Regional Power Cable (1) Remote Control (2) Batteries for Remote Control (2) Super Cool Stylus 2.0 (1) User Guide (1) Quick Install Guide (1) Wireless Adapter 2.0 + WAP
--------------------------	--

## Warranty

Warranty term and upgrade options vary by region. Contact your local reseller or distributor for information and visit [clevertouch.com/about/warranty](http://clevertouch.com/about/warranty)

## Compliance & Certification

<b>Regulatory Certification</b>	CE, FCC, UL, Energy Star & EEC
---------------------------------	--------------------------------



## Statement

Size and weight vary by configuration and manufacturing process, please refer to the actual product. The product images are for illustrative purposes only and may slightly differ in appearance, color, size, etc. from the actual product. The description, illustrations, etc. in this document may subject to change in accordance with the latest product specification and performance. Should the above-mentioned change in the document become necessary, the document may be updated without written notice.

© 2024 Boxlight. All rights reserved. Sahara Presentations Systems PLC. is part of the Boxlight group of companies, and the owner of trademarks in several global jurisdictions including but not limited to Clevertouch, the Clevertouch logo, UX Pro, IMPACT™, IMPACT Plus™, Impact MAX, CleverLive, LUX, Lynx, CleverMessage, Cleverstore and Clevershare. All third-party trademarks (including logos and icons) referenced by Boxlight remain the property of their respective owners. Unless specifically identified as such, Boxlight's use of third-party trademarks does not indicate any relationship, sponsorship, or endorsement between Boxlight and the owners of these trademarks. Applicable Terms and Conditions for warranty and support available at [clevertouch.com/about/warranty](http://clevertouch.com/about/warranty). All weights and dimensions are approximate. Product specifications are subject to change without notice. Boxlight.com.