



Rollout™

FrontRow Rollout is a management software designed for school IT and technology directors, as well as integrators, to streamline the configuration, deployment, and management of FrontRow classroom audio systems. This software functions as a Mobile Device Management (MDM) solution specifically for FrontRow devices, simplifying the process of maintaining device lists across schools, customizing data views, monitoring device statuses, and viewing firmware versions.

FrontRow Rollout allows users to edit device names, access configuration web pages swiftly, and push batch configuration file updates while preserving device names and IP addresses. Additionally, it supports batch firmware updates remotely, ensuring that devices are always up to date. The software is compatible with Windows 10 or later and supports various FrontRow devices including UNITY, UNITY Campus, CM-900, Juno Connect, and ICR-01.



Key Features

- Maintain FrontRow device list for all your schools
- Customizable data views
- Display status, (online/offline), of supported FrontRow devices
- View firmware versions
- Edit device names
- Quickly access configuration web pages
- Push batch configuration file updates to any number of devices while maintaining device names and IP addresses
- Rollout batch firmware updates easily and remotely

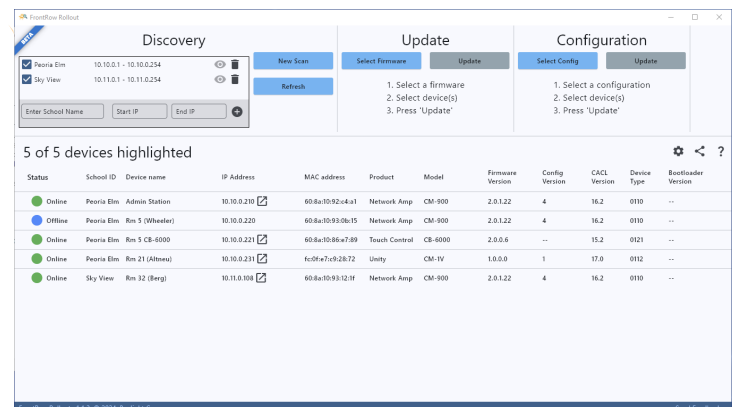
SPECIFICATIONS

Requirements

Windows 10 or later

Supported devices

UNITY & UNITY Campus
 CM-900 (ezRoom AV, Voice & Alert)
 Juno Connect
 ICR-01 (Smart Receiver)
 CB-6000
 CB-2000
 CM-3000
 CMP-500
 CM-800



NOTE: FrontRow is not responsible for improper or accidental misuse of Rollout when updating configuration files or updating firmware. Follow user guide instructions and test on a single device before deploying batch updates to ensure you achieve desired results. Limit Rollout access to users who are trained in FrontRow hardware.

Rollout Screen Sections

The screenshot shows the Frontrow Rollout application interface. At the top, there are three main sections: 'Discovery', 'Update', and 'Configuration'. The 'Discovery' section includes a 'New Scan' button, a 'Refresh' button, and a form with 'Enter School Name', 'Start IP', and 'End IP' fields. The 'Update' section has 'Select Firmware' and 'Update' buttons, with instructions: '1. Select a firmware', '2. Select device(s)', '3. Press 'Update''. The 'Configuration' section has 'Select Config' and 'Update' buttons, with instructions: '1. Select a configuration', '2. Select device(s)', '3. Press 'Update''. Below these sections is a table with columns: Status, School ID, Device name, IP Address, MAC address, Product, Model, Firmware Version, Config Version, CACL Version, Device Type, and Bootload Version. The table currently shows '0 of 0 devices highlighted' and 'No data'. On the right side of the table, there are icons for settings (gear), export (share), and help (question mark). At the bottom left, there is a version number '8', and at the bottom right, there is a 'Send Feedback' link '9'. The footer contains 'Frontrow Rollout v1.1.0, © 2024, Boxlight Corp' and 'Send Feedback'.

- 1 Discovery** This section maintains the list of schools.
- 2 Update** This section allows you to update firmware on selected FrontRow hardware.
- 3 Configuration** This section allows you to push configuration files to selected FrontRow hardware.
- 4 Device List** This section displays the status of the device.
- 5 Settings** This link opens the “Show Column” window allowing you to choose which columns to view.
- 6 Export Device List** The link creates a CSV file showing the data available in the Device list.
- 7 External Help** This link will open your web browser to the Rollout application support website.
- 8 Version Number** This section shows the version of the Rollout application running on your computer.
- 9 Send Feedback Link** This link will open a window that allows you to provide feedback about the Rollout application.
Note: *We do appreciate your input helping us improve our software.*

Learn more at gofrontrow.com

