

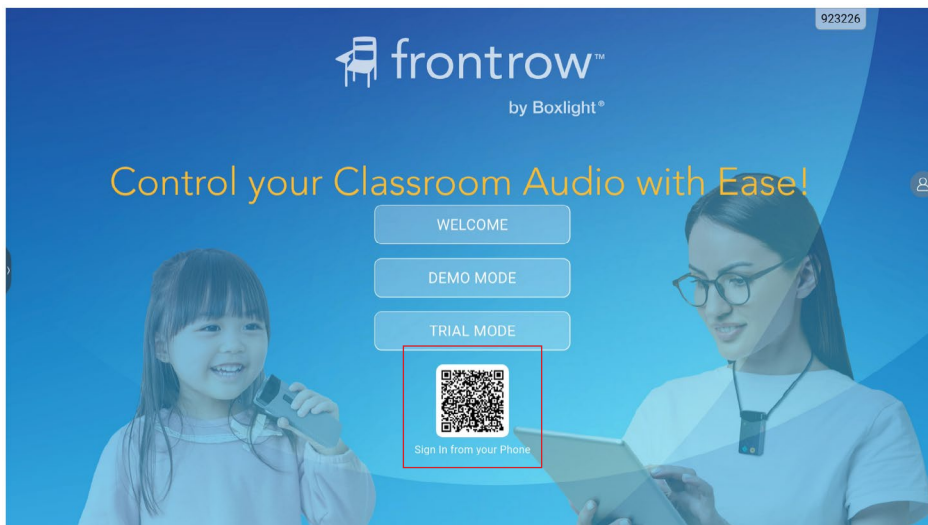
# MyFrontRow 2.0 Release Notes

## NEW FEATURES

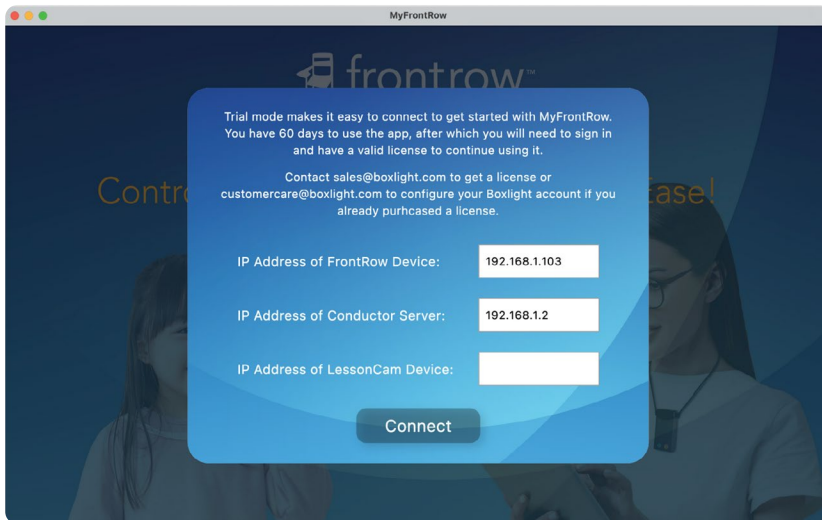
- In addition to the existing versions of MyFrontRow for Mac, Windows, iPad, and Boxlight displays (Android), MyFrontRow is now available for iPhone on the App Store, and Android devices on the Google Play Store!



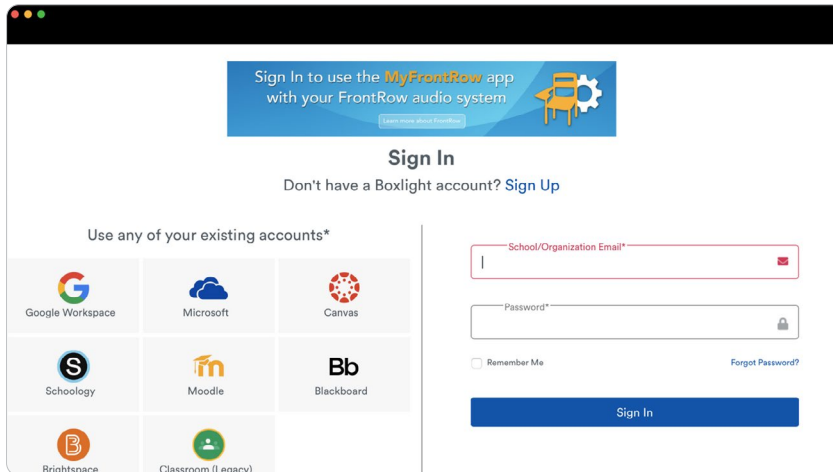
- On **Boxlight/Clevertouch interactive displays** and the **Clevertouch Live Rooms panel**, you can now log in with a QR code from your phone, making it easier to get started. Just point your phone camera at the code, click the link, and sign-in, and a few seconds later the app on the display will connect to your room(s) as if you had signed in on the display.



- A **New Trial** mode makes it easy to use MyFrontRow immediately with your **UNITY**, **ezRoom**, or **Juno** system while your school gets set up on the Admin Portal. It's also great for trying out MyFrontRow, or (for resellers) when internet access is a challenge at trade shows.



- A new and improved **sign-in experience** avoids browser pop-up blockers on Mac and Windows, with a dedicated sign-in window that works directly with the app.



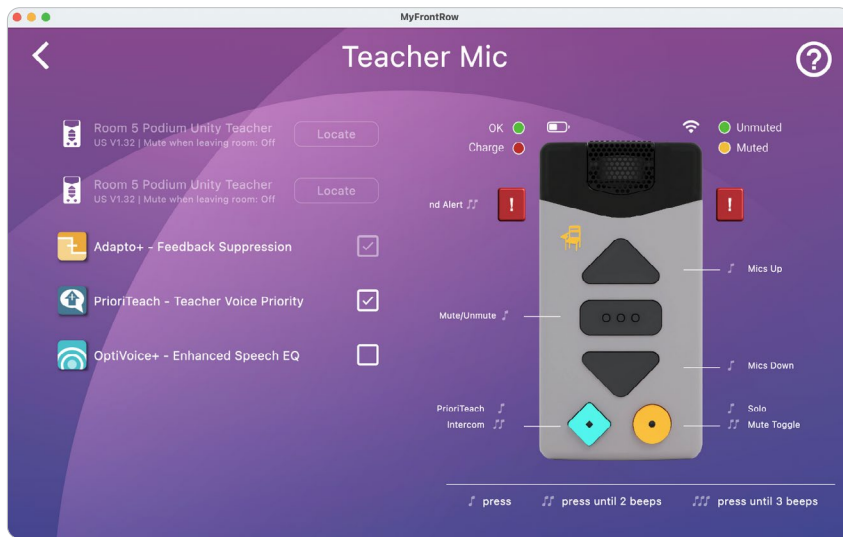
- On the UNITY detail page, there are now **Bluetooth Pairing** and **Mic Registration** buttons, making it easier to access those features.



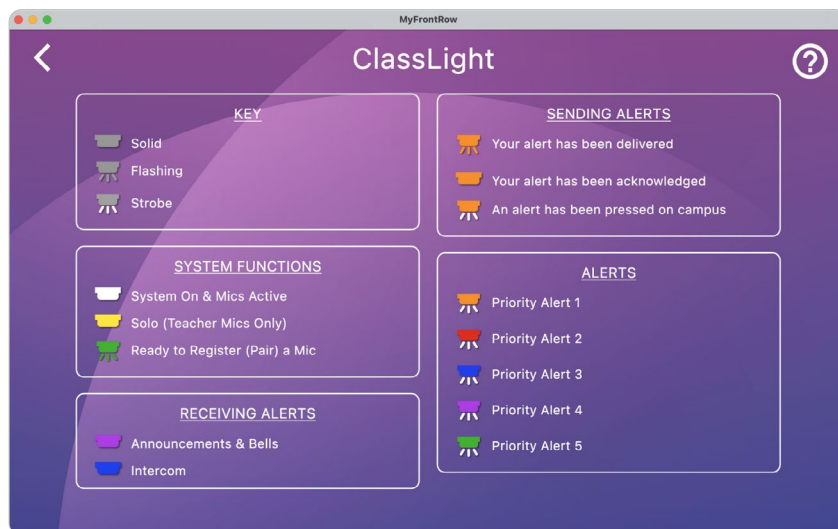
The remaining features listed require **UNITY Fall 2025 Firmware**.

(check <https://boxlight.com/support/download-software> for updates, or sign up for email updates)

- MyFrontRow now shows you the actual **Mic Button actions** customized for your classroom's ELEVATE Microphones, displays the connected Mics in the room, and shows what voice options are active.

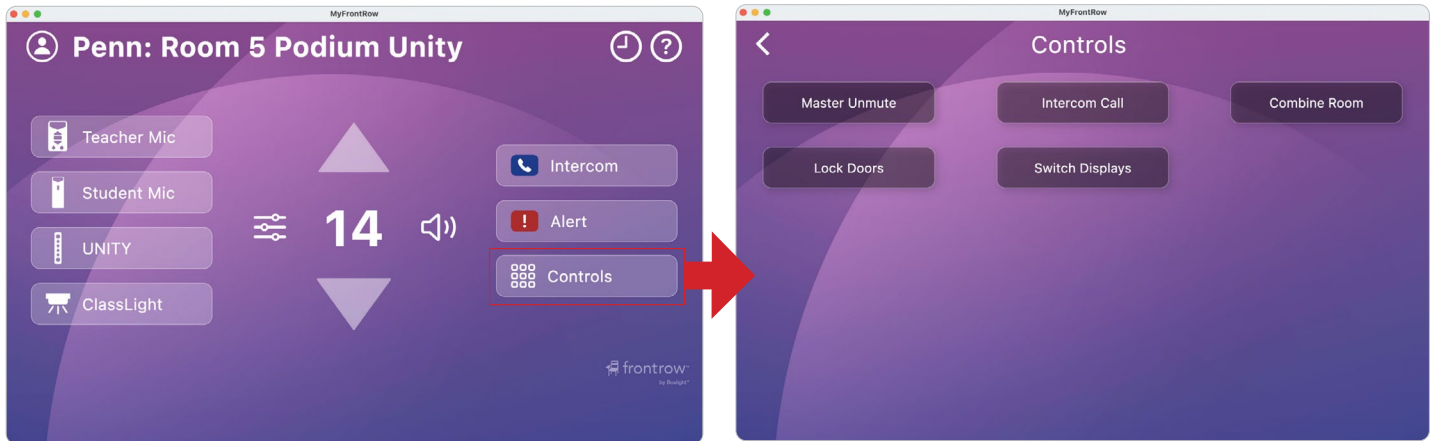


- The **ClassLight** page will show your true customized colors for your classroom.



- You can now create a **“Controls”** page, providing the ability to add a button for any Event you can program in the UNITY. For example, you can have buttons to turn on devices in the room such as displays, control HDMI matrix switchers, lock doors, activate strobe lights, switch projector/display inputs, or almost any control command. See the programming section of the UNITY User Guide for details on what is possible.

To add any event to the MyFrontRow Controls page, just add an **asterisk (\*)** before the name of the event.



# UNITY

Room 5 UNITY (Podium)

Status: Okay / Running

- System
  - About
  - Load / Save
  - Power
  - Network / Serial
  - Security
- Settings
  - Audio
  - Mic Info
  - Mic Options
  - Mic Buttons
  - PA / Intercom
  - ClassLight
- ActionScript
  - Command Line
  - Shortcuts
  - Actions
  - Events

#	Name	Mic*	Trigger	Action List
11	*Master Unmute		PGO off	Master Unmute, ALD+USB Unmute
12	Master Mute		PGO on	Master Mute, ALD+USB Mute
13	-Event 13-		Stream off	
14	-Event 14-		Stream on	
15	PrioriTeach	✓	Diamond-short	PrioriTeach
16	Intercom	✓	Diamond-medium	Intercom Call
17	-Event 17-		Diamond-long	
18	Solo	✓	Circle-short	Solo
19	Mute Toggle	✓	Circle-medium	Mute Toggle, ALD+USB Mute Tog
20	-Event 20-		Circle-long	
21	*Intercom Call		Intercom btn	Intercom Call
22	Send Alert	✓	Alert btn	Send Alert
23	Mics Up	✓	No Trigger	Mic Mix Vol Up
24	Mics Down	✓	No Trigger	Mic Mix Vol Dn
25	-Event 25-		No Trigger	
26	*Combine Room		No Trigger	Mute Toggle
27	*Lock Doors		No Trigger	Mute Toggle
28	*Switch Displays		No Trigger	Mute Toggle
29	-Event 29-		No Trigger	
30	-Event 30-		No Trigger	

[New](#)
[Edit](#)
[Copy](#)
[Delete](#)
[Test](#)
[Show URL](#)

16 of 30 used

\*Event is assigned to a mic button  
Note: "Diamond" and "Circle" triggers refer to the device's faceplate. For consistent behavior with the mic, make sure the assigned events match.

- When microphones are active (removed from charger) and awake, the home screen will now show how many mics are active in the teacher and student mic buttons. When a Bluetooth device is connected to the UNITY, the home page will now show a Bluetooth icon in the UNITY button. **NOTE: Icons do not show up right away, you may need to go to another page and back to force the refresh.**



On the **FrontRow Device** page, there are more details about the hardware, for support purposes.



#### Known Issues:

- The app does not yet support Windowed mode on the Clevertouch LUX or MPG (coming soon).
- Bluetooth icon in the UNITY button sometimes disappears